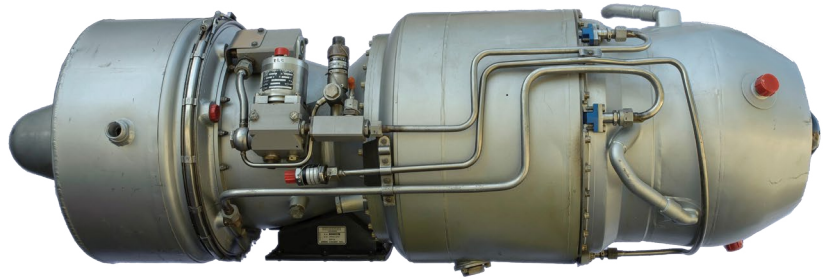




BET SHEMESH ENGINES LTD.

R & D Division

SOREK 4



BET SHEMESH ENGINES' SOREK 4 Engine

is a low diameter simple turbojet engine.

The engine is a single shaft and has one axial and one centrifugal compressor stage driven by a single turbine.

The engine features a full authority digital electronic control (FADEC).

A 2 Kw alternator is integrated in the engine.

Engine's main features are:

Performance

Rated SLS thrust	810 Lb	(367 Kg)
SFC SLS	1.225 Lb/Lbf/Hr	
Airflow	12.3 Lb/Sec	(5.6 Kg/sec)
Altitude	33,000 ft	
Flight Speed	Mach 0.9	

Dimensions

Dry weight	176 Lb	(84 Kg)
Length	42.6"	(1082 mm)
Max. diameter	13"	(330 mm)